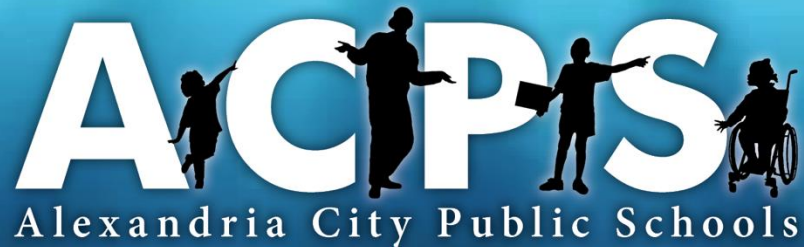


High School Capacity



Thursday, March 22, 2018



Every Student Succeeds

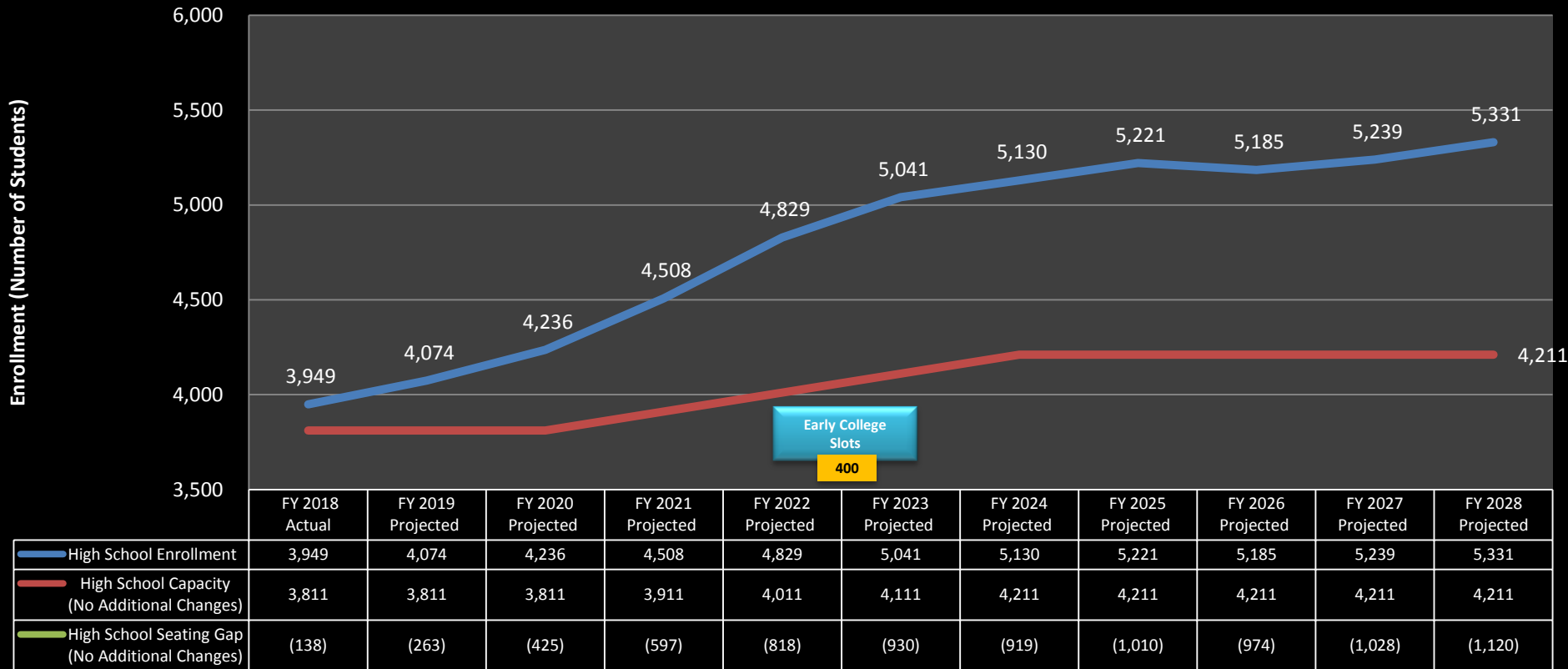
Essential Questions

- What are the needs for high school capacity?
- What key activities have been done to address high school capacity?
- What key activities are planned?
- What is the timeline?



High School Capacity Needs

ACPS High School Projected Enrollment and Capacity: FY 2018 - FY 2028



High Schools in Neighboring Jurisdictions

| AREA | Quantity of High Schools | Largest | Smallest | Average | Ideal |
|-----------------------------------|--------------------------|---------|----------|---------|--------|
| Arlington County ¹ | 4 | 2,193 | 108 | 1,445 | 2,200* |
| Fairfax County ² | 25 | 2,782 | 1,755 | 2,190 | 2,500 |
| Loudoun County ³ | 9 | 2,157 | 960 | 1,531 | 1,800 |
| Prince William ⁴ | 11 | 2,897 | 941 | 2,305 | 2,800 |
| Prince George's ⁵ | 22 | 2,573 | 775 | 1,543 | 1,700 |
| Montgomery ⁶ | 15 | 2,790 | 1,202 | 1,790 | 1,500 |
| District of Columbia ⁷ | 28 | 1,696 | 146 | 496 | NP |
| Average | 16 | 2,441 | 841 | 1,614 | 2,083 |
| USA | 26,407 | 9,010 | NP | 854 | - |
| Alexandria | 1 | | | | 1,600 |

Notes:

np = not provided

High Schools include comprehensive public schools serving grades 9-12

**In Arlington, 2,200 students is the maximum high school facility size*

Sources:

High school enrollment information is from National Center for Education Statistics Common Core Data.

¹*Arlington Facilities and Student Accommodation Plan, FY 2016-25*

²*Fairfax County Public Schools Strategic Facilities Plan, 2012*

³*Loudoun County Public Schools FY 2016 - FY 2020 Capital Improvement Plan*

⁴*Prince William County Public Schools - Regulations*

⁵*Prince George's County Public Schools Educational Specification Prototypes, 2015*

⁶*Montgomery County Public Schools Educational Facilities Master Plan and FY 2015-2020 Capital Improvement Program*

*Taken from ACPS High School Educational Specifications, developed in 2016, approved in January 2017

Contributing Activities To - Date

- High School Educational Specification
- Long Range Educational Facilities Plan
- Grade Level Feasibility Study
- Joint Task Force recommendations
- 2019 CIP Budget – City commitment

Going Forward – 2 Part Planning

Part 1: Planning Study & Community Engagement

- *Research* High school capacity and educational program models from similar cities
- *Engage* Conversations with Alexandria community at-large
- *Recommend* Bring options to School Board
- *Overlay* Generate final options to conduct Part 2

***Modified site-specific educational specifications must be generated for Part 2**

Going Forward – 2 Part Planning

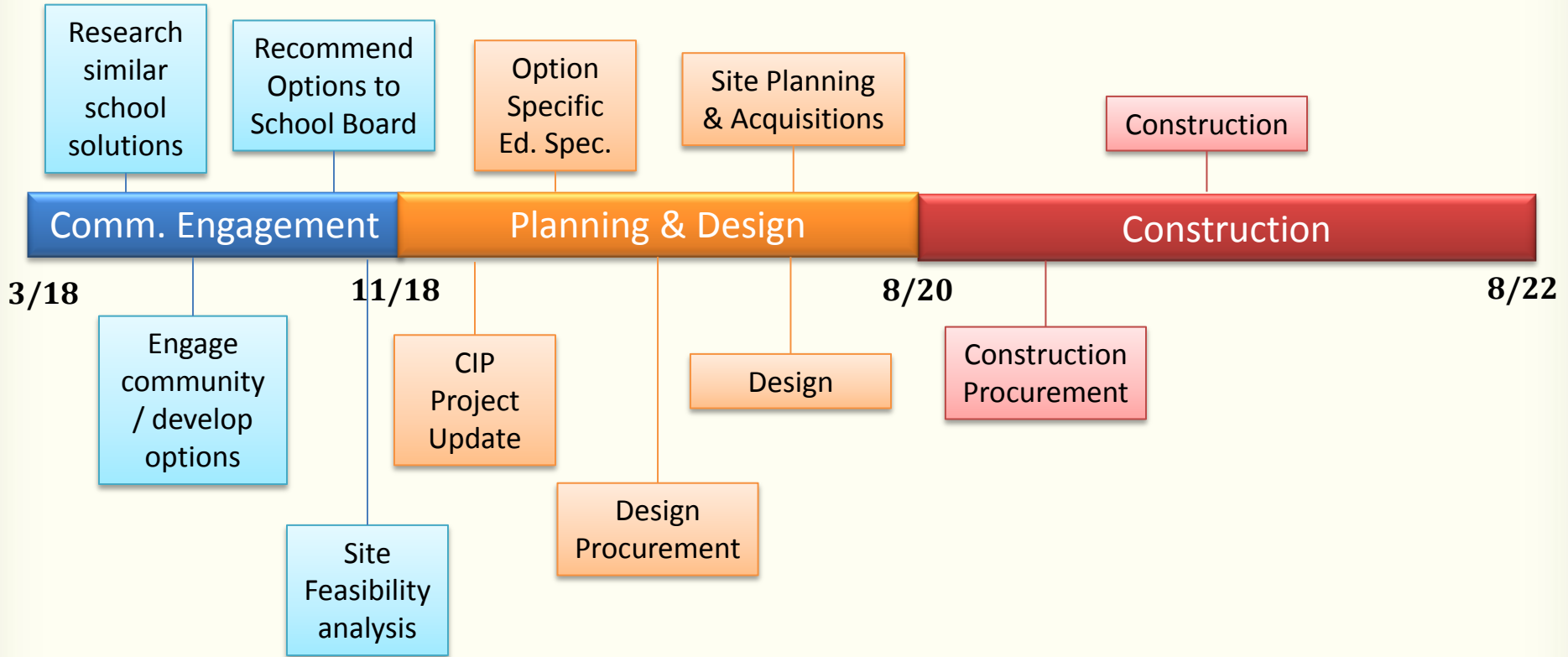
Part 2 Site(s) Option Feasibility Study

- *Apply* Option(s) finalized by School Board to available space
- *Update* Cost estimates and project scope as needed



Project Implementation

** Best case Timeline Objectives*



Questions?

Mignon R. Anthony

Chief Operating Officer

mignon.anthony@acps.k12.va.us

703-619-8097

Erika Gulick

Facilities Planner/GIS Specialist

erika.gulick@acps.k12.va.us

703-619-8298